



NetVCR®

Proactive Network, Service and Application Monitoring



End-to-end proactive network service and application performance monitoring and troubleshooting



100% visibility into network applications and services in real-time (e.g., eCommerce, Email, VoIP, Multicast, custom applications, etc.)



On-demand and scheduled reporting in multiple time scales (subseconds to months)



Clear understanding of the when, what, what else, how of network events with point and click remote diagnostics



Reduce MTTR with real-time event alerting, cause analysis and incident response

Features & Benefits

- ⊙ Monitor QoS and SLAs in real-time
- ⊙ Drill-down to packet-level information for granular deep-packet analysis
- ⊙ Replace manual troubleshooting processes with proactive discovery, classification and analysis of diverse applications and protocols
- ⊙ Traffic capture and multi-time-scale analysis on a variety of interfaces such as Ethernet (10/100/1000/10000 Mbps), ATM (OC3/OC12), POS (OC3/OC12/OC48), etc.
- ⊙ Ad-hoc and scheduled reporting on multiple time-scales (subseconds to months) for both real-time operations and strategic decision making
- ⊙ Capacity planning, trending, accounting, usage (including DiffServ)
- ⊙ Option for automated troubleshooting via NIKSUN NetXperts
- ⊙ Role based access control
- ⊙ Plug & play device with intuitive web-based interface

Proactive Network, Service & Application Monitoring

NIKSUN's NetVCR is the world's first full-function appliance for advanced real-time network, service and application performance monitoring. It intelligently integrates vital management functions into a single scalable architecture to facilitate:

- ⊙ Proactive end-to-end SLA/QoS monitoring and surveillance
- ⊙ Continuous, interactive analysis from link to application
- ⊙ Multi-timescale analysis (sub-milliseconds to months)
- ⊙ Real-time and historical expert auto-analysis
- ⊙ Multi-timescale ad-hoc and scheduled reporting (sub-milliseconds to months)

Providing 100% visibility into the WAN, MAN and LAN converged networks in multiple time frames (from sub-milliseconds to months), NetVCR recognizes multiple protocols and applications on its own for proactive discovery, classification, correlation and real-time analysis of root-cause within a few mouse clicks! NetVCR provides a large array of benefits including *proactive alerting from link to application, point and click diagnostics and troubleshooting, QoS management and reporting, capacity planning/trending, accounting/usage (including DiffServ), application/services monitoring (including e-commerce, email, VoIP, Multicast, FIX, custom applications, etc.), performance analysis (loss, delay, latency, jitter, service/application response time, goodput, throughput, etc.) and seamless integration with other management systems.*

NetVCR's consolidation of critical network monitoring and auto-analysis functions positions it as a greatly valuable solution that immediately replaces multiple monitoring/troubleshooting devices and empowers enterprises with the key advantages of automation, triage, and cost efficient instrumentation.

Proactive End-to-end SLM/QoS Monitoring

NetVCR continuously monitors both inbound and outbound traffic, applications and services at real-time production traffic rates, simultaneously capturing, time-stamping and indexing full-packets in the NIKSUN Network Knowledge Warehouse for zero loss monitoring of enterprise, carrier and ISP networks and services. Each packet is analyzed in real-time at line speeds and alerts immediately inform users of service interruptions or network/application slowdowns as soon as they occur. Each alert is linked to corresponding packet information, giving users the option to immediately zoom down to the sub-millisecond level and initiate deep-packet transaction content inspection, troubleshooting and root-cause discovery.

Continuous, Interactive Super Analyzer (from Link to Application)

Thanks to the embedded NIKSUN Network Knowledge Warehouse, NetVCR is an analyzer that never forgets. Users have access to a large repository of data of actual traffic from sub-second levels to hours and days or even months. This allows users to 'rewind' back in time to a problem event for troubleshooting and diagnosis. With shared workspace and web-based network-to-application layer analysis, NetVCR allows users to collaborate across the globe to troubleshoot and diagnose past or current problems without loss. There is no capture limit as imposed by other legacy analyzers.

Multi-timescale Analysis across all OSI Layers

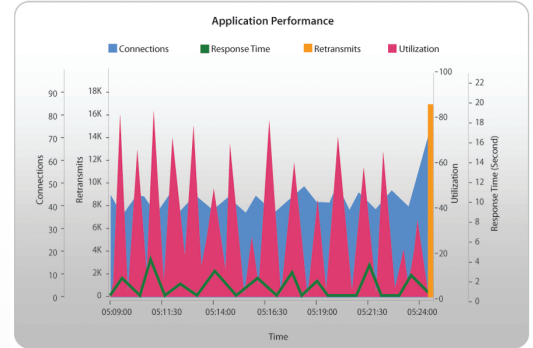
NetVCR supports multi-timescale analysis (packet by packet, from sub-millisecond levels to minutes, hours, days or even months) and multi-level drill-down (link to application level), enabling users to start at a high-level view and zoom down to application and/or hosts to detect and analyze short-time events, that are undetected when data is aggregated by the minute, for reduced MTTR.

Real-time & Historical Expert Auto-analysis and Alarming

Optional pre-written decode scripts, available via add-on NetXperts, NetRTX and NetSLM modules, further reduce MTTR by providing both real-time and historical auto-analysis and alarming from link to application layers.

Multi-timescale Ad-hoc & Scheduled Reporting

NetVCR facilitates highly customizable reports on-demand or as per a defined schedule within multiple time-frames to suit the needs of both senior management and their supporting staff. Quick, real-time operational reports spanning extremely flexible time frames of sub-milliseconds to minutes or hours or days maximizes operational efficiency, while long-term reports spanning months or even years of network history assist in strategic decision making, planning, trending, optimization and change control. With NetVCR's unlimited storage option, it is possible to archive network information for extremely long periods of time if needed.



Real-time Traffic Analysis

Technical Information

Network Interfaces supported (Full Duplex, Half Duplex): 10GigE, 10/100/1000 Mbps (copper/fiber), T1/E1, V.35, X.21, T3/E3, HSSI, OC3, OC12, OC48

Protocols Supported: TCP/IP, UDP/IP, IPv6, IPv4, Ethernet MPLS, Frame Relay, PPP, Bay PPP, CISCO HDLC, PoS (OC3/OC12/OC48), ATM (OC3/OC12), MLPP, WCP, STAC, VLAN (ISL & IEEE 802.1q), IEEE 802.3 (Ethernet), IP fragments

Form Factors: A variety of 1U and 2U form factors are available for data centers, core networks, central offices and remote branch applications. Internal storage scales to several terabytes. Unlimited external storage option available.

Integration: TACACS+, RADIUS, LDAP, Active Directory and a range of network performance and security management tools such as EMC Smarts, ArcSight, Tivoli Netcool, etc. All NIKSUN products, including the NIKSUN NetOmni Suite for aggregation and correlation of network information from geographically distributed sources.



100 Nassau Park Blvd
Princeton
NJ 08540
t: +1.609.936.9999
toll free: +1.888.504.3336
f: +1.609.419.4260
info@niksun.com
www.niksun.com



About NIKSUN: NIKSUN is the premier provider of patented multi-timescale network and security monitoring and real-time analysis solutions that identify, alert, analyze and report on incidents that impact performance, security, compliance applications and services. NIKSUN's NetOmni Suite is the only technology available today that offers large organizations the ability to consolidate views into globally distributed high-speed converged networks according to user responsibilities. NIKSUN empowers organizations to make fast, accurate decisions that assure network performance, security and compliance goals are met and data integrity is protected.

NIKSUN, the NIKSUN logo, NetDetector, NetVCR, NetVoice are either registered trademarks or trademarks of NIKSUN, Inc. in the United States and/or other countries. Other product & company names mentioned herein may be trademarks of their respective owners. NIKSUN, Inc. shall not be liable for damages of any kind for use of this information, which is subject to change without notice and may include typographical errors, inconsistencies, omissions, mistakes, etc. Copyright© 2009 NIKSUN, Inc. All rights reserved. NK-DS-NV09.05