

Proactive Network, Service and Application Monitoring



End-to-end proactive network service and application performance monitoring and troubleshooting



100% visibility into network applications and services in real-time (e.g., e-commerce, email, VoIP, multicast, custom applications, etc.)



On-demand and scheduled reporting in multiple timescales (subseconds to months)



Clear understanding of the when, what, what else, and how of network events with detailed diagnostics



Reduce MTTR with real-time event alerting, and correlated root-cause analysis

Features & Benefits

- » *Traffic capture and multi-time-scale analysis for traffic rates through 100Gbps*
- » *Monitor QoS and SLAs in real-time*
- » *Drill down to packet-level information for granular deep-packet analysis*
- » *Replace manual troubleshooting processes with proactive discovery, classification and analysis of diverse applications and protocols*
- » *Ad-hoc and scheduled reporting on multiple timescales (subseconds to months) for both real-time operations and strategic decision making*
- » *Visibility into network for capacity planning, trending, accounting, usage*
- » *Automated troubleshooting via NIKSUN NetXperts*
- » *Role based access control*
- » *Plug & play device with intuitive web-based interface*

Proactive Network, Service & Application Monitoring

NIKSUN's NetVCR Alpine is the world's first full-function appliance for advanced real-time network, service and application performance monitoring. It intelligently integrates vital management functions into a single scalable architecture to facilitate:

- » Proactive end-to-end SLA/QoS monitoring and surveillance
- » Continuous, interactive analysis from link to application
- » Multi-timescale analysis (sub-milliseconds to months)
- » Real-time and historical expert analysis
- » Multi-timescale ad-hoc and scheduled reporting (sub-milliseconds to months)

Providing 100% visibility into infrastructure in multiple time frames (from sub-milliseconds to months), NIKSUN NetVCR recognizes a multitude of protocols and applications for proactive discovery, classification, correlation and real-time analysis with just a few mouse clicks! NIKSUN NetVCR provides a large array of benefits including proactive alerting from link to application, point and click diagnostics and troubleshooting, QoS management and reporting, capacity planning/trending, accounting/usage, application/services monitoring (including e-commerce, email, VoIP, multicast, FIX, custom applications, etc.), performance analysis (loss, delay, latency, jitter, service/application response time, goodput, throughput, etc.) and seamless integration with other management systems.

NIKSUN NetVCR's consolidation of critical infrastructure and application monitoring and analysis capabilities makes it a highly valuable solution that immediately replaces multiple monitoring/troubleshooting devices and empowers enterprises with the key advantages of automation, triage, and cost efficient instrumentation.

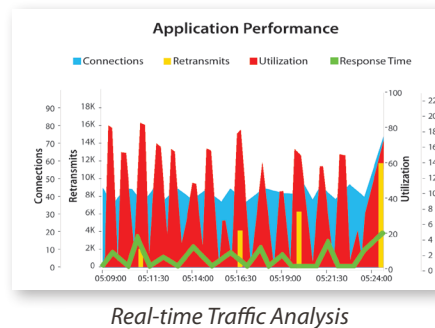
Proactive End-to-end SLM/QoS Monitoring

NIKSUN NetVCR continuously monitors both inbound and outbound traffic, applications and services at real-time production traffic rates, simultaneously capturing, timestamping and indexing full packets in the NIKSUN Network Knowledge Warehouse for zero loss monitoring of enterprise, carrier and ISP networks and services while also generating intelligence for insightful analytics. All traffic is analyzed in real-time at line speeds and alerts immediately inform

users of service interruptions or infrastructure/application degradation as soon as they occur. Each alert is linked to contextual analysis and corresponding packet information, giving users the option to immediately zoom down to the sub-millisecond level for troubleshooting and root-cause discovery.

Continuous, Interactive In-depth Analysis (from Link to Application)

Thanks to the embedded NIKSUN Network Knowledge Warehouse, NIKSUN NetVCR is an analyzer that never forgets. Users have access to a large repository of data of actual traffic from sub-second levels to hours and days or even months. This allows users to 'rewind' back in time to a problem event for troubleshooting and diagnosis. With shared workspace and web-based link-to-application layer analysis, NIKSUN NetVCR allows users to collaborate across the globe to troubleshoot and diagnose past or current problems seamlessly.



Multi-timescale Analysis Across All OSI Layers

NIKSUN NetVCR supports multi-timescale analysis (from sub-millisecond levels to minutes, hours, days or even months) and multi-level drill-down (link to application layer), enabling users to start at a high-level view and zoom down to application and/or hosts to detect and analyze short-lived events, that are undetectable when data is aggregated by the minute, for reduced MTTR. Bounce diagram analysis visualizing each turn in an application session enables even faster diagnostics.

Real-time & Historical Expert Analysis and Performance Alarming

Optional capabilities available via add-on NetXperts, NetRTX and NetSLM modules, further reduce MTTR by providing both real-time and historical advanced analysis and alarming from link to application layers.

Multi-timescale Ad-hoc & Scheduled Reporting

NIKSUN NetVCR facilitates highly customizable reports generated on-demand or per a defined schedule to suit the needs of both senior management and their supporting staff. Quick, real-time operational reports spanning extremely flexible time frames of sub-milliseconds to minutes or hours or days maximizes operational efficiency, while long-term reports spanning months or even years of network history assist in strategic decision making, planning, trending, optimization and change control. With NIKSUN NetVCR's unlimited storage options, it is possible to archive network information for extremely long periods of time.

Technical Information

Network Interfaces Supported
(Full Duplex, Half Duplex): 1GigE (copper/fiber), 10GigE (fiber), or 20/40/60/80/100GigE (fiber).

Supported Protocols: TCP, UDP, SCTP, IPv4, IPv6, fragmented IP, IEEE 802.3 (Ethernet), Ethernet MPLS, VLAN (ISL, IEEE 802.1q and stacked 802.1q), DNS, ISO8583, FIX, GTP, SIP, CDMA 2000, RADIUS, Diameter, and many more.

Form Factors: A variety of 1U, 2U and 4U+ form factors are available. Internal storage scales to tens of terabytes. Unlimited external storage options are available.

Integration: Authentication - TACACS+, RADIUS, LDAP and Active Directory. All NIKSUN products integrate with NIKSUN NetOmni Full Suite for enterprise-wide aggregation, reporting and visualization.

Interested in learning more?

For more information, please visit us online at niksun.com.



100 Nassau Park Blvd • Princeton • NJ 08540 • USA
t: +1.609.936.9999 • toll free: +1.888.504.3336
f: +1.609.419.4260
info@niksun.com • www.niksun.com

About NIKSUN, Inc. NIKSUN is the recognized worldwide leader in making the Unknown Known. The company develops a highly scalable array of real time and forensics-based cyber security and performance management solutions for large enterprises, government & intelligence agencies, service providers and financial services companies. NIKSUN's award winning enterprise solutions deliver unprecedented flexibility and packet capture power. The company's patented real-time analysis and recording technology is the industry's most comprehensive solution for secure and reliable network infrastructure and services. NIKSUN, headquartered in Princeton, New Jersey, has sales offices and distributors throughout the US, Europe, the Mid East and Asia-Pacific. For more information, please visit www.niksun.com.

NIKSUN, NetDetector and NetVCR are either registered trademarks or trademarks of NIKSUN, Inc. in the United States and/or other countries. Other product and company names mentioned herein may be the trademarks of their respective owners. NIKSUN, Inc. shall not be liable for damages of any kind for use of this information. Copyright© 2014 NIKSUN, Inc. All rights reserved.
NK-DS-netvcr-1014